



an ISO 9001-2015
Certified Company



Sustained growth
through synergy
with our Partners

www.globalengineeringpune.com



About Us

GLOBAL ENGINEERING is a high precision custom machine shop that has built on industry leading reputation on with regards to quality, and on time delivery over the years.

Our policy is to supply products and services which at all times meet and or exceed both the design requirements and the quality specifications of customer contracts.

We specialize exclusively in high precision machining and assembling of components for numerous customers. We provide integrated and value added services with regards to multi component kitting and supply chain management.

Why Us

Currently we are employing 36 highly skilled personnel whom are having attheir disposal some of the most advanced state of the art technology and equipment. This allows us to maintain our continued goal of achieving the highest quality standards in the industry.

Presently we are working at 50 to 60% of our normal capacity, hence we are able to accommodate a large influx of new work into our workplace and still maintain our excellent level of quality and on time service.

Our Strength

Mr. Gurudas Wagmare (Manager)

Supervisors	: 03
Skilled Workers	: 23
Semiskilled Workers	: 10
Quality Inspector	: 03
Helpers	: 05

Head Office

Gat No. : 156 / 1544 / 168 / 171 / 94, B.U. Bhandari Estate, Sanaswadi, Taluka Shirur,
Dist. Pune 412 208, Maharashtra, INDIA



Director

Mr. Rahul J. Dhamdhare

MBA HR, BSC AgBM, BCOM, GDC&A



Director

Mr. Amol J. Dhamdhare



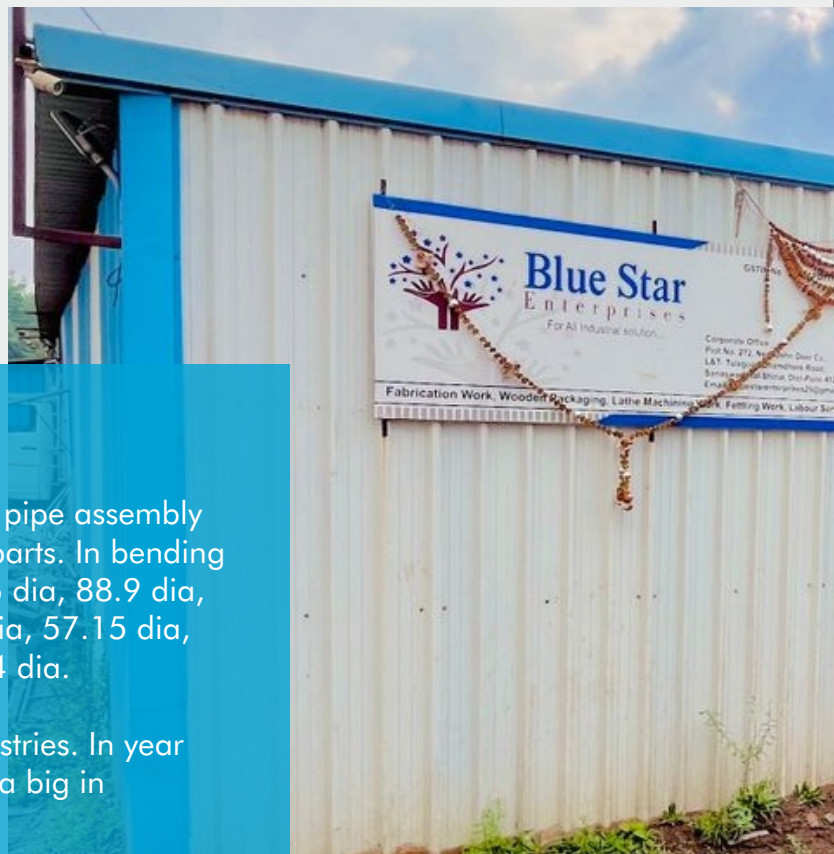
BLUE STAR ENTERPRISES

For All Industrial Solution

About Us

Manufacturing of exhaust pipe assembly, Filter pipe assembly and Pipe welding assembly, Press Parts, Proto parts. In bending we are manufacturing 127 dia bending, 101.6 dia, 88.9 dia, 81.2 dia, 76.2 dia, 65.5 dia, 63.5 dia, 61.5 dia, 57.15 dia, 50.8 dia, 44.45 dia, 38.1 dia, 28.58 dia, 25.4 dia.

We have another company other than Sai industries. In year 2014 Swaraj Enterprises formed in which also a big in manufacturing parts.



Our Services



Fabrication Work



Wadden Packaging



Machine Shop



Fattling Work



Labour Seviles



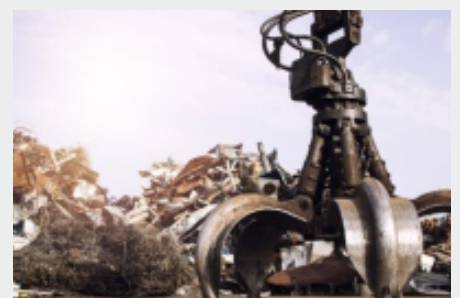
Transport Services

Contact Us

Plot No. 272, Near John Deer Co., L&T - Talegaon Dhamdhere Road, Sanaswadi, Tal. Shirur, Dist. Pune 412 208.

bluastorenterprises29@gmail.com

+91 97637 17722



Scrap Merchant

ANGEL ASSOCIATE

Industrial Services

About Us

We provide our customer Fettleing Work, which is designed under strict technical super vision for finest surface delivery.

Our Fettleing shop is also equipped with shot blasting machine that is capable of handling job of 1220mm and weighing unto 1500 kg. Our professionals are experts in their field and assist us in rendering these services in compliance with the international standards of quality. Using different metals

Our Services



Fettleing Work



Fettleing Work



Fettleing Work



Fettleing Work



Fettleing Work



Fettleing Work



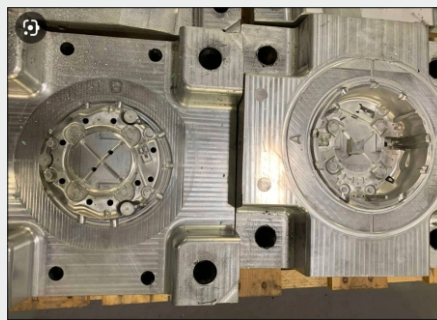
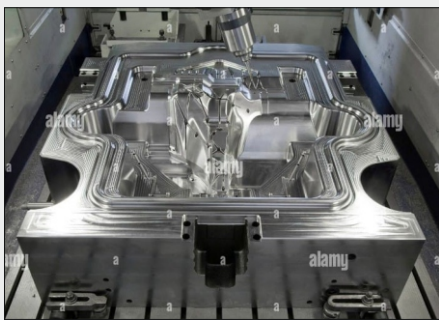
Fettleing Work

Contact Us

Plot No. 272, Near John Deer Co., L&T - Talegaon Dhamdhare Road, Sanaswadi, Tal. Shirur, Dist. Pune 412 208.

bluastoreenterprises29@gmail.com

+91 97637 17722



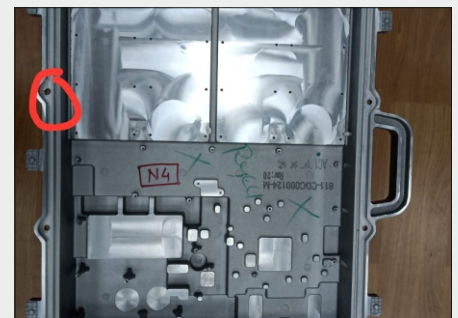
MAKE	: HARTFORD	SPINDLE TAPER	: BT-50
MODEL	: HSA-320	TOOL CAPACITY	: 24 Nos
CONTROLLER	: Siemens Control	BED SIZE	: 3000*2000
X AXIS	: 3000 mm	MAX PALLET LOAD	: 10000 kg
Y AXIS	: 2000 mm	RAPID	: 20k*20k*18k
Z AXIS	: 1000 mm	SPINDLE RPM	: 6000
		TRUE COOLENT	: 20 bar pressure



MAKE : KAFO
MODEL : HMC-630
CONTROLLER : Fanuc Series 18i-MB
X AXIS : 1050 mm
Y AXIS : 800 mm
Z AXIS : 880 mm

SPINDLE TAPER : BT-50
TOOL CAPACITY : 60 Nos
BED SIZE : 630*630
MAX PALLET LOAD : 1200 kg
RAPID FEED : 48 m/min

EUMACH - 01 No.s



MAKE : EUMACH
MODEL : HMC-500
CONTROLLER : Fanuc Series 18i-MB
X AXIS : 600 mm
Y AXIS : 650 mm
Z AXIS : 700 mm

SPINDLE TAPER : BT-50
TOOL CAPACITY : 60 Nos
BED SIZE : 500*500
MAX PALLET LOAD : 800 kg
RAPID FEED : 40 m/min



GLOBAL
Engineering

VMC MACHINE

BFW - 01 No.s



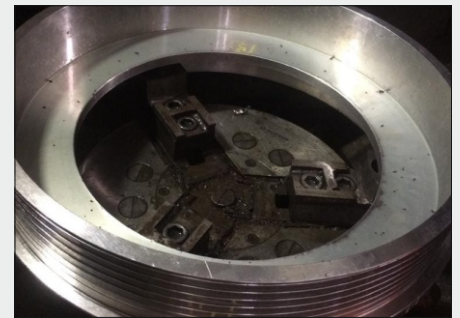
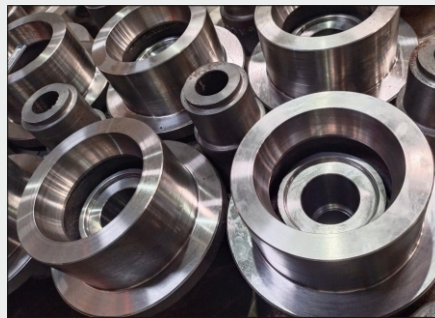
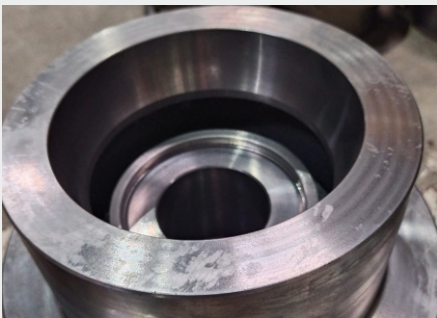
MAKE : BFW
MODEL : BMV 45 TC24-Agni
CONTROLLER : Fanuc Series 0i-MF
X AXIS : 800 mm
Y AXIS : 450 mm
Z AXIS : 500 mm

SPINDLE TAPER : BT-40
TOOL CAPACITY : 24 Nos
BED SIZE : 1000*450
MAX PALLET LOAD : 600 kg
RAPID FEED : 32 m/min

LEADWELL - 01 No.s

MAKE : LEADWELL
MODEL : SV-500
CONTROLLER : Fanuc Series 18-M
X AXIS : 450 mm
Y AXIS : 450 mm
Z AXIS : 550 mm

SPINDLE TAPER : SK-40
TOOL CAPACITY : 32 Nos
BED SIZE : 650*450
MAX PALLET LOAD : 500 kg
RAPID FEED : 20 m/min



MAKE : BFW
MODEL : BVL 550H
CONTROLLER : Fanuc Series Oi-TF
X AXIS : 320 mm
Z AXIS : 530 mm

TOOL STATION : 12 Nos
CHUCK SIZE : 415 mm
MAX SWING DIAMETER : 650 mm
MAX TURNING DIAMETER : 580mm
MAX TURNING LENGTH : 500 mm
RAPID FEED : 30 m/min

BFW - 01 No.s



MAKE : BFW
MODEL : BFWIVA-Rhino
CONTROLLER : Fanuc Series Oi-TF
X AXIS : 250 mm
Z AXIS : 500 mm

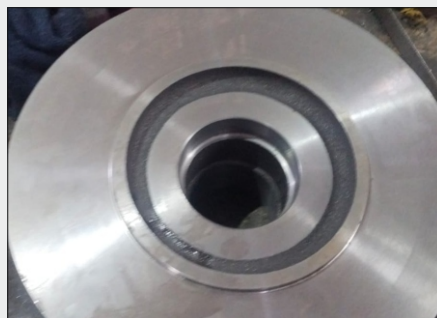
TOOL STATION : 12 Nos
CHUCK SIZE : 250 mm
SWING OVER BED : 500 mm
MAX TURNING DIAMETER : 250 mm
MAX TURNING LENGTH : 500 mm
RAPID FEED : 24 m/min



GLOBAL
Engineering

CNC MACHINE

BIGLIA - 01 No.s



MAKE : BIGLIA
MODEL : B-501/SM
CONTROLLER : Fanuc Series 18-T
X AXIS : 250 mm
Z AXIS : 500 mm

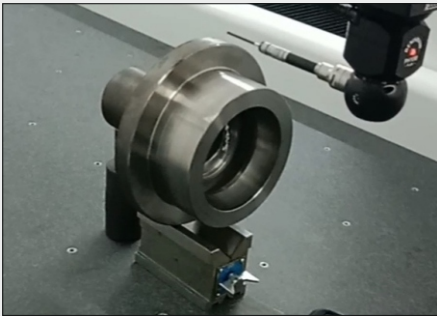
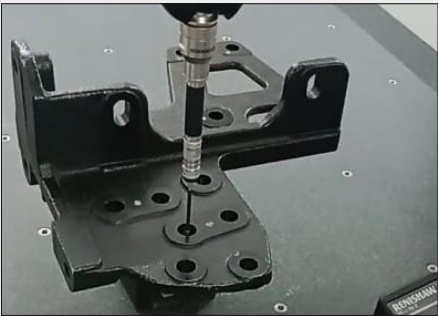
TOOL STATION : 12 Nos
CHUCK SIZE : 250 mm
SWING OVER BED : 500 mm
MAX TURNING DIAMETER : 300 mm
MAX TURNING LENGTH : 500 mm
RAPID FEED : 20 m/min

JYOTI - 08 No.s



MAKE : JYOTI
MODEL : DX250-500
CONTROLLER : Fanuc Series Oi-TF
X AXIS : 250 mm
Z AXIS : 520 mm

TOOL STATION : 12 Nos
CHUCK SIZE : 300 mm
SWING OVER BED : 500 mm
MAX TURNING DIAMETER : 350 mm
MAX TURNING LENGTH : 500 mm
RAPID FEED : 24 m/min



MAKE	: SPECTRA	RENISHAW	: PH 10 m
X AXIS	: 1000 mm	ACCURACY	: 2.2 micron
Y AXIS	: 1500 mm	REPEATABILITY	: 2 micron
Z AXIS	: 800 mm		

09 No.s



**5.5 / 7.5 FEET
HEAVY DUTY MACHINE**

**12" CHEK
RAJKOT MADE**



Surface Table - 1 No.s
(1000*630*150 mm)



Height Gauge - 1 No.s
(0-300 mm)



Dial Vernier - 1 No.s
(300 mm)



Digital Vernier - 2 No.s
(300 mm)



Vernier Caliber - 1 No.s
(1000/600 mm)



Micrometer - 1 No.s
(0-25 mm)

MEASURING INSTRUMENTS

sales@globalengineeringpune.com



Angle Plate - 1 No.s



Digital Micrometer - 1 No.s
(0-25)



Bore Gauge - 3 No.s
(0-25)



Sphere Gauge - 2 No.s
(50-150)



APG Unit - 4 No.s



Electric Gauge - 2 No.s

an ISO 9001-2015 Certified Company



GLOBAL
Engineering

QUALITY



Quality Policy

We, at Global Engineering are committed to create "Total Customer Satisfaction". We will achieve this by manufacturing quality products & offering prompt services to our customers, at competitive price, On time - every Time. We will be customer focused in all our actions & will put our efforts to improve continuously.

Quality Vision

- ▶ To create "Total Customer Satisfaction".
- ▶ To offer innovative & timely solutions at competitive price.
- ▶ To emerge as a "One Stop Shop" for products services in our domain.
- ▶ To invest time money and other resources to attain long term and profitable partnership with our customers.

Quality Objectives

- ▶ Top most priority to customer requirements & Delivery.
- ▶ Minimising customer complaints.
- ▶ Continual improvement / up-gradation of technology being used by us.
- ▶ Team building through effective communication and mutual respect.
- ▶ Training, up-gradation and evaluation of our employees.

OUR CLIENTS

sales@globalengineeringpune.com



Alicon Group
Shikrapur



Neosym Industries Ltd.
Sanaswadi



Radheya Machining Pvt. Ltd.
Sanaswadi



RSB Transmition (I) Ltd.
Sanaswadi



Western Forging (1) Ltd.
Sanaswadi



Contact Us



Gat No. : 156 / 1544 / 168 / 171 / 94,
B.U. Bhandari Estate, Sanaswadi, Tal. Shirur,
Dist. Pune 412 208, Maharashtra, INDIA

sales@globalengineeringpune.com

+91 98509 14920

+91 97637 17722

+91 97637 17703

www.globalengineeringpune.com